

Apprenticeship Training Programme

Phase 1: *With Employer*

Induction Training
Introduction to Health & Safety Training
Introduction to Tools & Equipment
Introduction to Basic Skills

Phase 2: *Delivered in Training Centre (21 weeks)*

Course Content:

Conversion of pre-sawn timber
Hand tools
Furniture
Veneering
Jig Making
Profile Sanding
Carcass manufacture
CAD
CNC

Phase 3: *With Employer*

Work-Based Assessments

Phase 4: *Delivered in Educational Colleges (10 weeks)*

Course Content:

CNC machine operation and programming
Construction manufacture
Furniture manufacture

Phase 5: *With Employer*

Work-Based Assessments

Phase 6: *Delivered in Educational Colleges (10 weeks)*

Course Content:

Furniture technology
Stair construction
CNC
Machine Technology

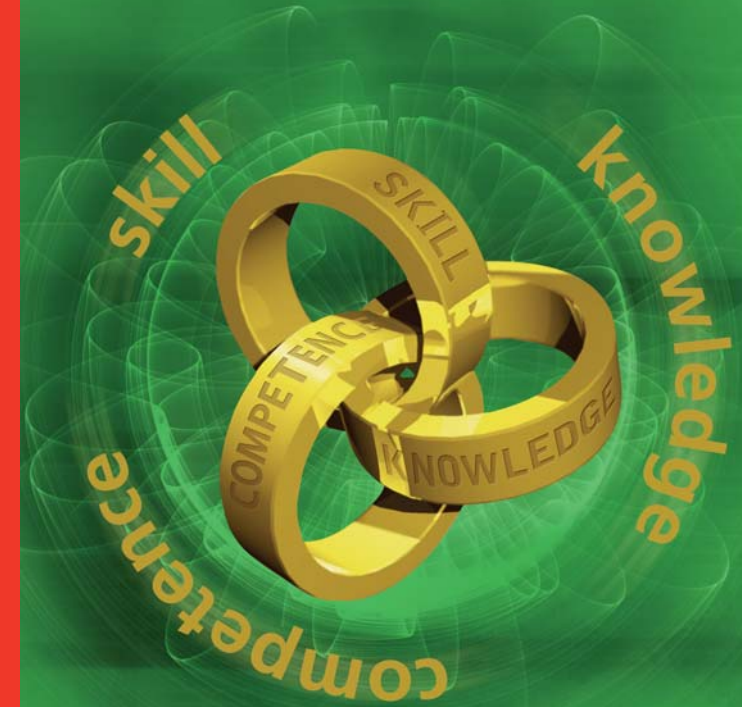
Phase 7: *With Employer*

Work-Based Assessments

The duration of this apprenticeship is a minimum of 4 years from date of registration in employment with a SOLAS-approved employer providing all phases have successfully been completed. On successful completion of the programme the learner is awarded a Level 6 Advanced Certificate Craft – Wood Manufacturing and Finishing.

For further information please contact your local Education & Training Board Training Centre or log onto www.SOLAS.ie

The Craft of Wood Manufacturing & Finishing



Ireland's EU Structural and Investment Funds Programmes 2014-2020.

Co-funded by the Irish Government and the European Union.



EUROPEAN UNION

Investing in your future
European Social Fund

 **Apprenticeship**

KNOWLEDGE. SKILL. COMPETENCE

Overview

The Craft of 'Wood Manufacturing and Finishing' encompasses the skills required in the manufacture of joinery and furniture products. The areas of work could be modern, traditional, reproduction, restoration furniture, stairs, windows, doors and wood moulding, stains, polishes and finishes.

Occupational Profile / Work Activities

The skills required are wide and varied and include working with wood, metals, plastics and other manufactured materials. Using woodworking machines and tools.

Automation: the use of woodworking machines and CNC is an integral part of manufacturing. Computer skills and CAD/CAM software knowledge for CNC programming is an essential part of the trade.

Personal Qualities and Skills

You will need a good awareness of space and size, good hand skills and a sense of design. A reasonable level of mathematics is required for measuring and calculating, and for dealing with automated and hi-tech equipment. You should be creative, yet able to work from plans and drawings with minimum supervision.

Patience and high levels of concentration are necessary, combined with the ability to carry out tasks accurately and precisely. It is important that you take pride in your work and make sure each operation is properly finished.

Aspects of Work

- Learn and develop new craft-related skills, knowledge and competence
- Working with wood
- Accuracy with numbers in counting, measuring and arithmetic
- Understanding technical drawings and diagrams
- Working with hand tools and power tools
- Operating, controlling and adjusting equipment / machines
- Work requiring accuracy and attention to detail
- Working in a workshop or factory
- Lifting or carrying heavy items
- Practical skills and theoretical knowledge

Opportunities / Progression

An apprenticeship is often the first step to a career as an Instructor, Teacher, Manager, or Owing your Own Business.

Opportunities are available to apprentices and crafts persons with the ability and initiative to progress to advanced technology courses and management courses. Holders of the FETAC Advanced Certificate-Craft may progress to a number of levels 6, 7 and 8 courses. These are available through Institutes of Technology, Schools of Management, Professional Institutes, etc.

Apprentices are advised to explore what opportunities are available to them to advance their careers.

Entry Requirements

The minimum age at which the employment of an apprentice may commence is 16 years of age.

The minimum educational requirements are:

1. Grade D in five subjects in the Department of Education & Science Junior Certificate Examination or an approved equivalent,
or
2. The successful completion of an approved Pre-Apprenticeship course
or
3. Three years' work experience gained over sixteen years of age in a relevant designated industrial activity as SOLAS shall deem acceptable

You must obtain a job as an apprentice in your chosen occupation. Your employer must be approved to train apprentices and must register you as an apprentice within 2 weeks of recruitment.

In certain crafts, apprenticeship applicants are required to pass a colour vision test approved by SOLAS.